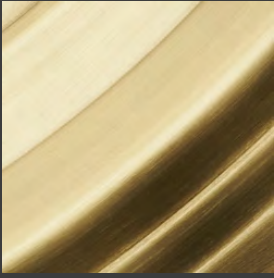


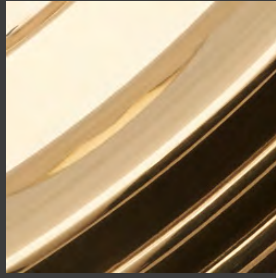
CRENSHAW

Finishes

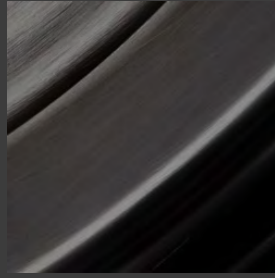
Brass



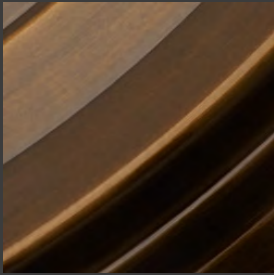
Satin Brass (SB)



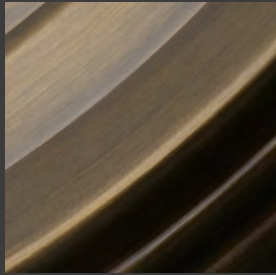
Polished Brass (PB)



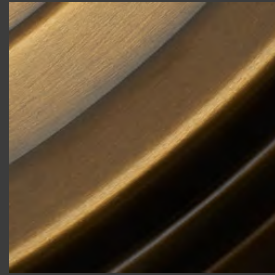
Oil-Rubbed Bronze (ORB)



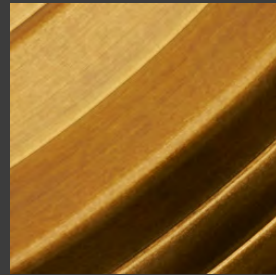
Antique Bronze (ABZ)



Antique Brass (AB)

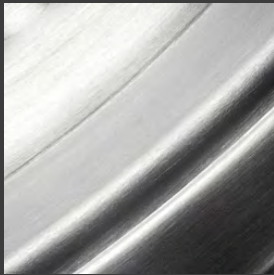


Aged Brass (AGB)

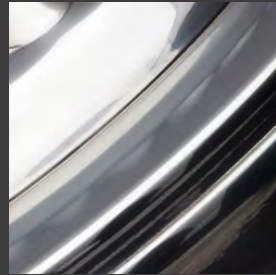


Bronze Lacquer (BQ)

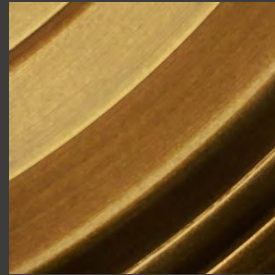
Aluminum



Satin Aluminum (SA)

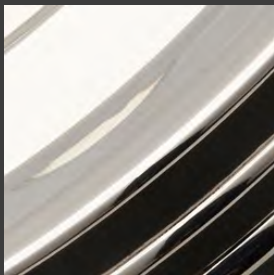


Polished Aluminum (PA)

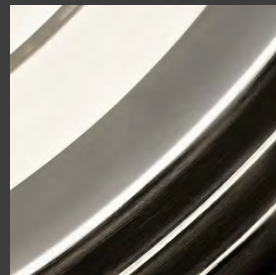


Faux Bronze Lacquer (BQFX)

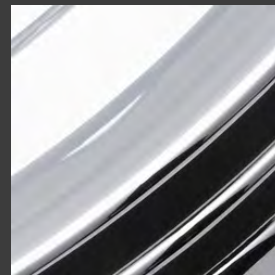
Plated



Polished Nickel (PN)

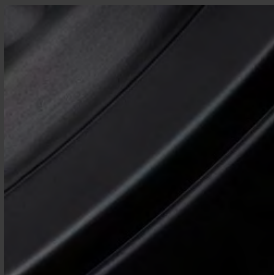


Satin Nickel (SN)

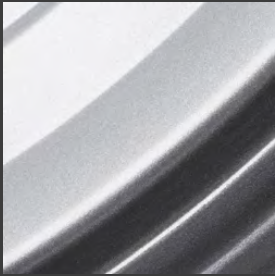


Polished Chrome (PC)

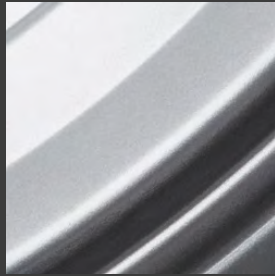
Steel



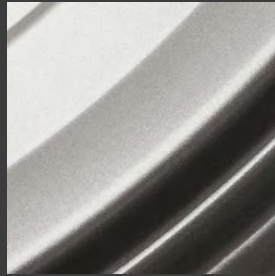
Black Iron Patina (BI)



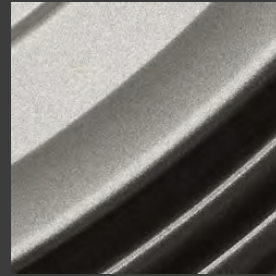
Aluminum (PT)



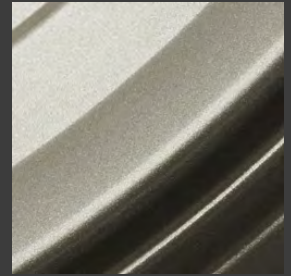
Satin Chrome (PT)



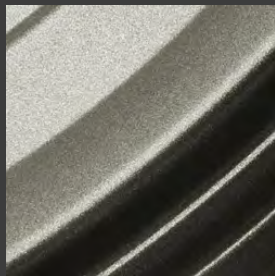
Satin Nickel (PT)



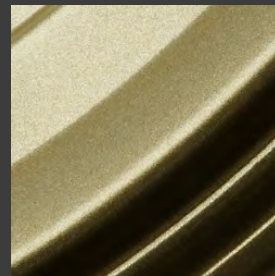
Stainless Steel (PT)



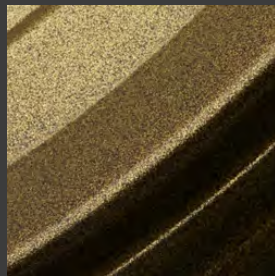
Fine Silver (PT)



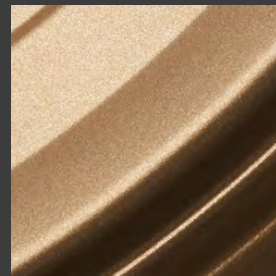
Pewter (PT)



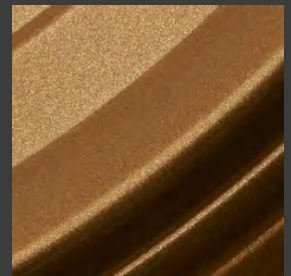
Bright Brass (PT)



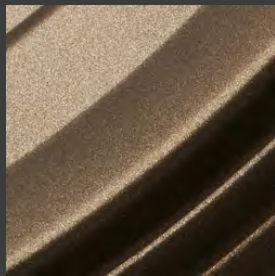
Antique Brass (PT)



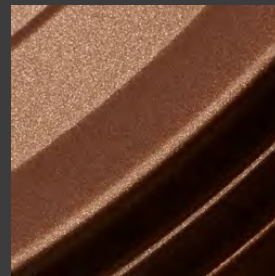
Natural Bronze (PT)



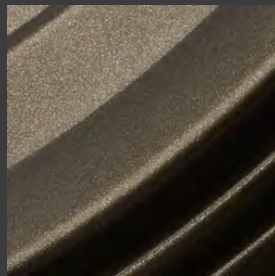
Roman Gold (PT)



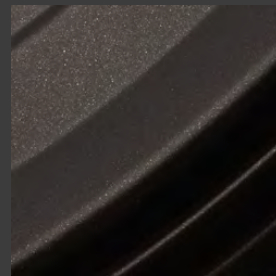
Roman Bronze (PT)



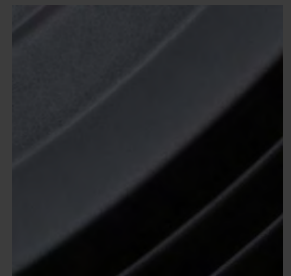
Copper Bronze (PT)



Rubbed Bronze (PT)



Statuary Bronze (PT)



Flat Black (PT)