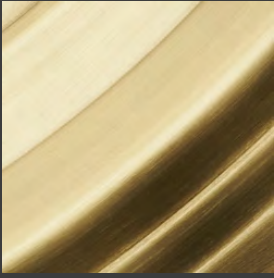


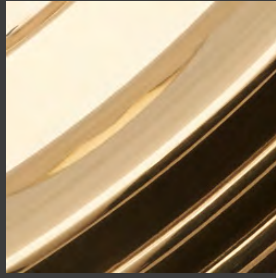
CRENSHAW

Finishes

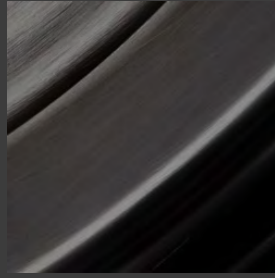
Brass



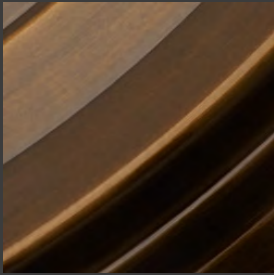
Satin Brass (SB)



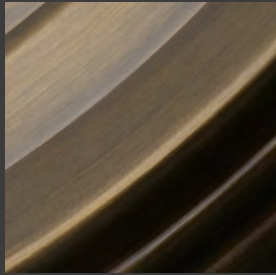
Polished Brass (PB)



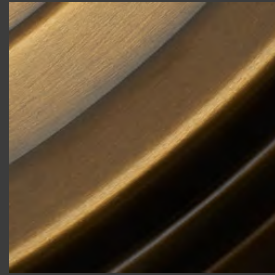
Oil-Rubbed Bronze (ORB)



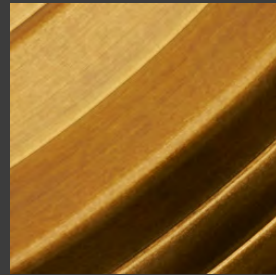
Antique Bronze (ABZ)



Antique Brass (AB)

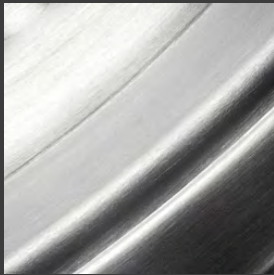


Aged Brass (AGB)

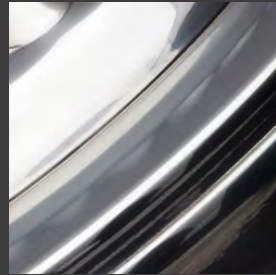


Bronze Lacquer (BQ)

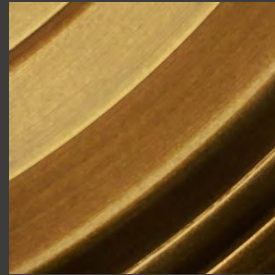
Aluminum



Satin Aluminum (SA)

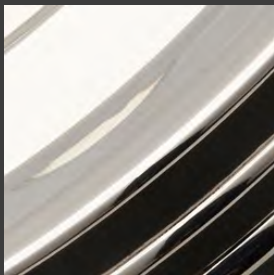


Polished Aluminum (PA)

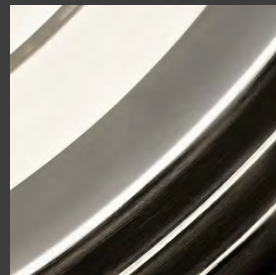


Faux Bronze Lacquer (BQFX)

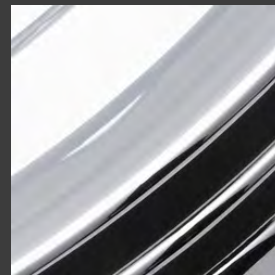
Plated



Polished Nickel (PN)

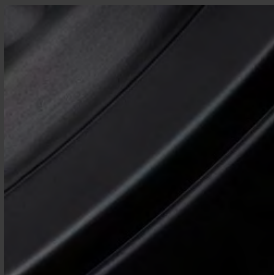


Satin Nickel (SN)



Polished Chrome (PC)

Steel



Black Iron Patina (BI)